



Fermentortm

**** Optional Tri-Clamp Blow-off Kit ****

Operation, Assembly, Maintenance Manual **Fits all Blichmann Engineering conicals**

Congratulations on your purchase, and thank you for selecting the FermentorTM stainless conical fermentor from Blichmann Engineering. We are confident that it will provide you years of service and many gallons of outstanding beer and wine. This manual will familiarize you with the use, assembly, and the sanitation procedures for the product.

****** PLEASE READ THOROUGHLY PRIOR TO USE FOR IMPORTANT SAFETY INFORMATION ******

Unpacking:

Please ensure that you have the following items packaged with your blow-off kit. Note that some items may have been preassembled for protection in shipment:

- 2 Gasket – 1” tri clamp, EPDM
- 2 1” tri-clamp clamps with wing nuts
- 1 1” tri-clamp 90 degree stainless steel elbow
- 1 Bulkhead nut (1” male thread X 1” tri clamp)
- 1 Bulkhead fitting (1” female thread X 1” tri clamp)
- 1 O-ring – bulkhead fitting (large)
- 1 Hose barb fitting – 1” tri clamp X 1” hose
- 1 Hose barb fitting – 1” tri clamp X ½” hose
- 1 Tool – sanitary bulkhead (small washer with 3 bent tabs)
- 1 P-clip with nylock nut, bolt, 2 washers
- 1 Rubber stopper

IMPORTANT !!

Warning: Sections labeled “Warning” can lead to serious injury or death if not followed. Please read these thoroughly and understand them completely before use. If you do not understand them or have any questions, contact your retailer or Blichmann Engineering (www.BlichmannEngineering.com) before use.

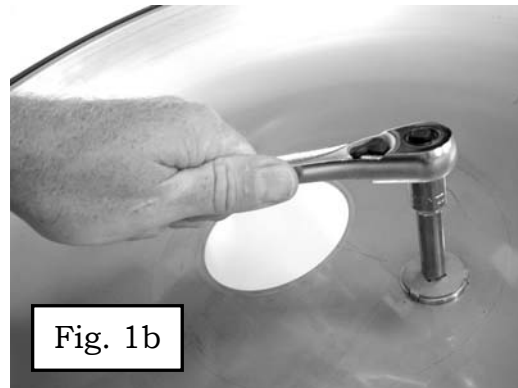
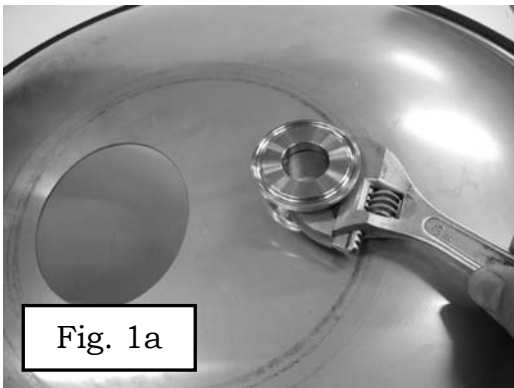
Caution: Sections labeled “Caution” can lead to equipment damage or unsatisfactory performance of the equipment. Please read these sections thoroughly. If you have any questions, contact your retailer or Blichmann Engineering (www.BlichmannEngineering.com) before use.

Assembly:

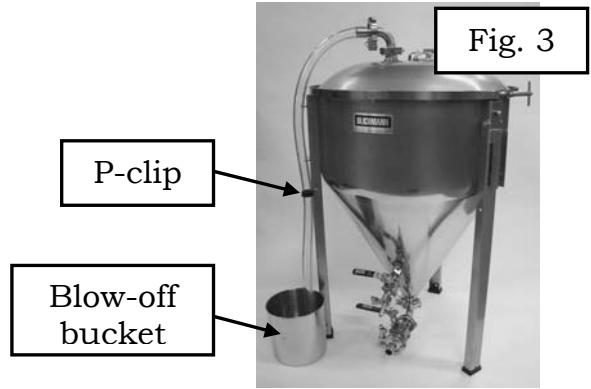
Threaded fittings

It is not necessary or recommended to use thread sealing tape on the threaded fittings of the tri-clamp bulkhead fitting. The sealing is accomplished by the o-ring, not the threaded joint.

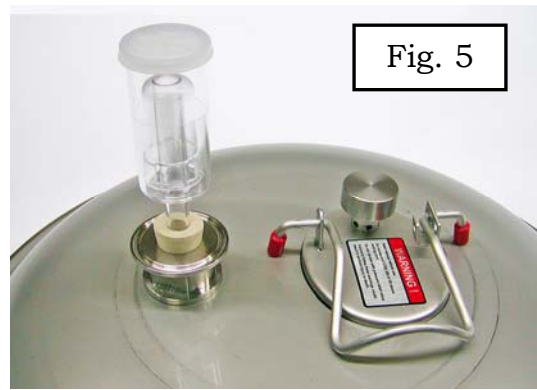
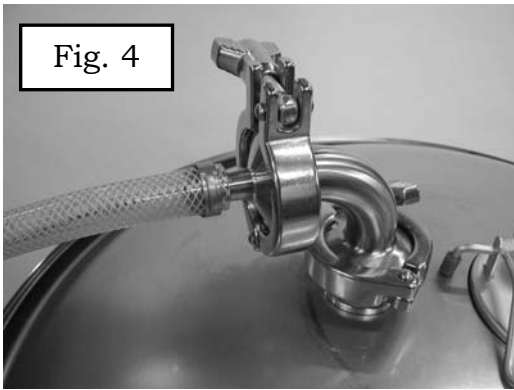
To install the tri-clamp bulkhead fittings first sanitize the surface of the hole in the lid with sanitizer using a cotton ball or clean cloth. Sanitize the fittings and o-ring, and install the o-ring in the groove of the bulkhead fitting. Please the bulkhead nut through the hole in the tank and thread the bulkhead fitting onto it hand tight. If you feel any resistance to movement, or dragging of the threads STOP IMMEDIATELY. Cross threaded fittings are NOT covered under warranty and will not come apart. Leaving the fittings wet with sanitizer will aid in assembly and act as a lubricant. Use an open end wrench on one side (see fig 1a) and the special tool and ratchet wrench on the other side as shown in fig 1b to tighten the fitting.



Install the elbow and barb fittings using the clamps and gaskets as shown in Fig 2. Install the P-clip and hose (1” ID hose not included) as shown in Fig 3 and place it in a bucket (not included) filled ½ full of sanitizer. Ensure that the hose is immersed at all times. After primary fermentation is past high krausen and bubbling out of your blow-off hose has stopped you can remove the blow-off hose and elbow and replace it with the stopper and airlock as shown in Fig. 5 for the remainder of the fermentation.



In lieu of using a barbed elbow and a rubber stopper included with your Fermentor™, the optional blow-off assembly includes a ½” barbed adapter (Fig 4) so you can make up a CO₂ hose (not included). Follow the pressurizing instructions as directed in the “Racking finished beer – CO₂ pressure pumping” section in the manual supplied with your conical.



Warning:

Do NOT use this product on any other manufacturers equipment! Blichmann Engineering products are designed with a pressure relief system to prevent dangerous over-pressurizations.

DO NOT UNDER ANY CIRCUMSTANCES USE THE ½” BARB X 1” TRI CLAMP CONNECTOR DURING FERMENTATION AS A BLOW-OFF HOSE. Dangerous over-pressurization could occur from plugging of this hose. The 1” barb allows adequate area for blow-off material (hops etc) to pass without clogging.

After Use Cleaning and Storage:

After use, rinse with hot water and soak the fittings and seals in hot PBW solution or boil as in the sanitizing procedure. Thoroughly dry all seals and o-rings and store them in a plastic bag and place inside the tank for the next use. Be sure to remove all the o-rings from the fittings to prevent from taking a “set

Note: it is not necessary to re-sanitize the fittings prior to the next use if you have stored them in a bag. Proceed directly to the assembly stage as you will be sanitizing them after assembly.

Contact your local Fermentor Distributor for replacement parts and lid seals.

BLICHMANN™ engineering

The Gear For Beer!

THERMINATOR™

Stainless Wort Chiller

- Fast! - chill 10 gal in 5 min!
- Fastest and smallest chiller available!
- Ultra low restriction
- Ideal for southern climates!



BREW METER™

Brewing Thermometer

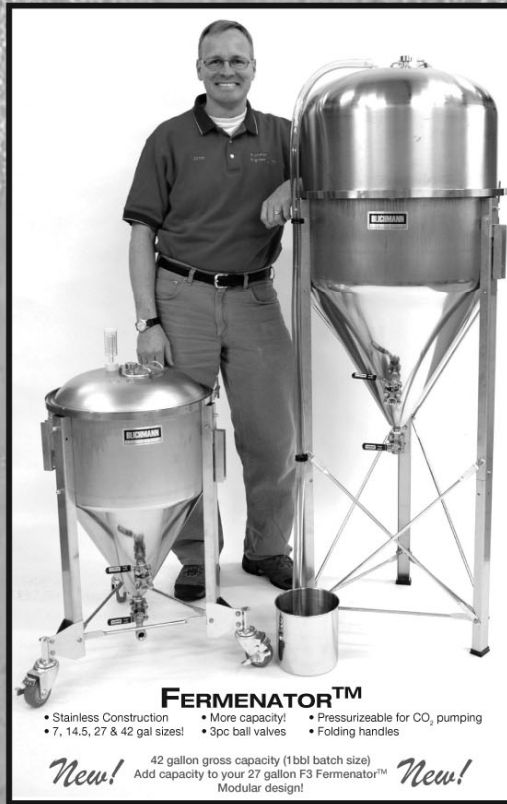
- Unique "made-for-brewing" dial face
- Best weldless design available
- 1/2" NPT connection available too!



THRU METER™

In-line Thermometer

- Set your counterflow chiller to ideal fermentation temperature
- Super easy to sanitize
- One-piece construction - no threads to hide bacteria!
- Saves water!



FERMENTATOR™

- Stainless Construction
- More capacity!
- Pressurizable for CO₂ pumping
- 7, 14.5, 27 & 42 gal sizes!
- 3pc ball valves
- Folding handles

New! 42 gallon gross capacity (1bbt batch size)
Add capacity to your 27 gallon F3 Fermentor™
Modular design! *New!*

QUICKCONNECTOR™

Stainless Quick Connect Fittings

- No tools req'd to install!
- No crevices to hide bacteria
- Fits all 1/2" NPT fittings
- 3/8" and 1/2" hose sizes



CASTERS

New!

- Fits all F2 and F3 models
- Super heavy duty casters
- Non marking locking wheels
- Outriggers for stability
- Not compatible with leg extensions



BEERGUN™

Bottle Filler - Revolutionary design!

- One hand intuitive operation
- Low foaming
- Easy to clean
- Stainless construction
- Superior to counter-pressure!



www.BlichmannEngineering.com

TC Blow-off kit V2

©Blichmann Engineering, LLC 2009